

# Promotional Drinkwares

These items have become a popular promotional item for businesses looking to expand their brand presence and attract customers. Among the variety of options available, promotional drinkwares such as personalized water bottles, coffee mugs and tea coasters are widely used by companies as they serve both functional and marketing purposes.



# Double Wall Bottles



1150 ml



850 ml



500 ml



WHT

BLK

BLU

## TM-040

Double-wall Stainless Steel Vacuum Bottles with easy-to-carry handles and trendy Matt finish colors. **Product Size** : 95 x 300 mm, **Printing Options** : Screen Printing, Laser Markings, Sublimation, 360° UV Printing.



## TM-041

Double-wall Stainless Steel Vacuum Bottles with easy-to-carry handle. Matt finish body, Spill proof lid & insulated feature. **Product Size** : 80 x 300 mm, **Printing Options** : Screen Printing, Laser Markings, 360° UV Printing.



## TM-015-BK

A Matte black texture double wall stainless steel bottle, Silver twist top lid holds a silicone ring to prevent leakage. **Product Size** : 80 x 260 mm, **Printing Options** : Screen Printing, Laser Markings, UV Printing.





**TM-013**

Double-wall stainless steel vacuum flask with Bamboo lid and easy-carry handle.  
**Product Size** : 70 x 255 mm, **Printing Options** : Screen Printing, Sublimation, 360° UV Printing.



**TM-017-BK**

Double wall stainless steel and bamboo flask. Black lid with a black handle and a removable tea infuser. **Product Size** : 75x 285 mm, **Printing Options** : Screen Printing, Laser Engraving, 360° UV Printing.



**TM-011-BK**

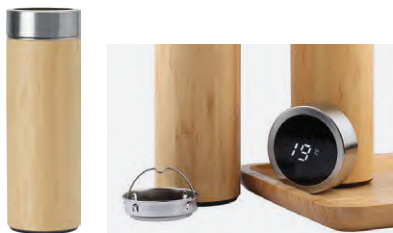
Bamboo Flask, Double wall stainless steel flask with black lid with a black handle and a removable tea infuser. **Product Size** : 65 x 235 mm, **Printing Options** : Screen Printing, Laser Engraving, 360° UV Printing.





### TM-012

Bamboo Thermos Flask. Made from bamboo & double wall stainless steel interior. **Product Size** : 65 x 255 mm, **Printing Options** : Screen Printing, Laser Engraving, 360° UV Printing.



### TM-018

Bamboo Flask with Temperature Display. Thermos flask with filter, Made from bamboo & double wall stainless steel interior. **Product Size** : 70 x 250 mm, **Printing Options** : Screen Printing, Laser Engraving, 360° UV Printing.



### TM-011

Stainless Steel Bamboo Flask. Thermos flask with tea infuser, Made from bamboo & double wall stainless steel interior. **Product Size** : 63 x 225 mm, **Printing Options** : Screen Printing, Laser Engraving, 360° UV Printing.





500 ml



1000 ml



500 ml



### TM-014

Double-wall in high borosilicate glass bottle and bamboo lid with tea infuser. **Product Size** : 70 x 230 mm, **Printing Options** : Screen Printing, Laser Engraving, 360° UV Printing.



### TM-034-NAT

Glass Bottle with bamboo lid & Eco-friendly sleeve. **Product Size** : 95 x 230 mm, **Printing Options** : Screen Printing, UV Printing, DTF Printing, 360° UV Printing.



### TM-036

Sadu Design Sleeve - Double wall in high borosilicate glass bottle and black lid with tea infuser. **Product Size** : 70 x 230 mm, **Printing Options** : Screen Printing.





BK R BL

### TM-009

Matte Stainless Steel Travel Bottle. **Product Size** : 70 x 270 mm. **Printing Options** : Screen Printing, Laser Markings, 360° UV Printing.



W SL

### 144

Glossy Stainless Steel Travel Bottle. **Product Size** : 70 x 270 mm. **Printing Options** : Sublimation, 360° UV Printing.



### TM-004-CL

Plastic Transparent Bottle with Stainless Cap & Base. **Product Size** : 70 x 270 mm, **Printing Options** : Screen Printing, UV Printing, 360° UV Printing.





### 141-W

Single-wall Aluminum Bottle, screw cap with practical integrated handle. Perfect for sublimation. **Product Size** : 75 x 250 mm, **Printing Options** : Sublimation, 360° UV Printing.



### 140

Single-wall Sports Bottle, Matte texture aluminum body with carabiner clip. **Product Size** : 73 x 260 mm **Printing Options** : Screen Printing, Sublimation, 360° UV Printing.





**TM-032-BM**

Bottle in combination of bamboo and glass materials. Screw on bamboo lid and an elegant, eco-inspired sleeve. **Product Size :** 65 x 230 mm. **Printing Options :** Heat Transfer, Screen Printing, 360° UV Printing.



**TM-008**

Glass and stainless steel bottle with softshell Polyester coloured sleeve. **Product Size :** 65 x 225 mm. **Printing Options :** Heat Transfer, Screen Printing, 360° UV Printing.



**TM-033-CL**

RPET Sports Bottle with String Handle. Made from Recycled materials. **Product Size :** 65 x 210 mm. **Printing Options :** Screen Printing, UV Printing, 360° UV Printing.







### TM-002

Bottle with Fruit Infuser. Simply pop in your favourite fruits & you're good to go - so let this be your daily water bottle! Design comes with a foldable handle & nozzle for easy drinking! **Product Size :** 68 x 245 mm, **Printing Options :** Screen Printing, 360° UV Printing.



### TM-003

A5 Memo water bottles are designed to fit stylishly into handbags, backpacks, laptop bags and more. Slim design to fit easily. Made from AS Plastic. **Product Size :** 130 x 210 x 32 mm, **Printing Options :** Screen Printing, UV Printing.



### TM-007

Promotional Travel Bottle with Straw. Clear Body with 4 Strips of Silicone Band. Tritan Plastic. **Product Size :** 75 x 230 mm, **Printing Options :** Screen Printing, UV Printing.



# Promotional Tumblers

Corporate & Personal use.



500 ml



470 ml

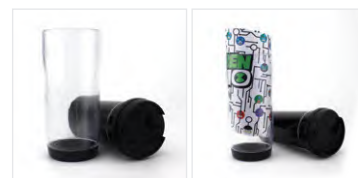


470 ml



## TM-005

Double wall Travel Tumbler with Clear lid.  
**Product Size :** 75 x 190 mm. **Printing Options :** Screen Printing, UV Printing, 360° UV Printing.



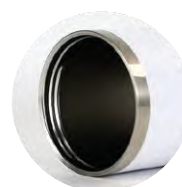
## TM-001

Promotional Travel Tumbler  
**Product Size :** 70 x 180 mm. **Printing Options :** Digital Printing.



## TM-006

Stainless Steel Travel Tumbler  
**Product Size :** 85 x 195 mm. **Printing Options :** Digital Printing.



900 ml

## TM-042

Double-wall vacuum stainless steel insulated tumbler with handle and straw.  
**Product Size :** 90 x 240 mm, **Printing Options :** Screen Printing, Sublimation, 360° UV Printing.





450 ml

### TM-010

Stainless Steel double wall body, and a touch of Cork material as base. Spill proof Transparent PVC lid. **Product Size** : 80 x 175 mm, **Printing Options** : Screen Printing (black), Sublimation (white), 360° UV Printing.



450 ml

### TM-016

Stainless Steel double-wall body, and a touch of bamboo material. Spill proof Transparent PVC lid. **Product Size** : 85 x 185 mm, **Printing Options** : Screen Printing, Laser Engraving, 360° UV Printing.



385 ml

### 151

Travel Mug made with ceramic material, and a touch of Cork material as base. Spill proof Clear lid. **Product Size** : 88 x 110 mm, **Printing Options** : Screen Printing, Sublimation.





### TM-024-BM

Travel Mug made with ceramic material, and a touch of Bamboo material on the lid and handle. **Product Size** : 80 x 110 mm, **Printing Options** : Screen Printing, UV Printing, Laser Engraving.



### TM-030

Double-walled borosilicate glass travel cup with bamboo lid. Capacity up to 320 ml, Ideal for cold or hot liquids, Lid with silicone insulation that facilitates the transport of the glass avoiding splashes. Microwave & dishwasher safe, when lid is removed. **Product Size** : 88 x 130 mm, **Printing Options** : Screen Printing, UV Printing, Laser Engraving. - Lid Area



### TM-031

Travel Cup is made from borosilicate glass, offering exceptional resistance & durability. Also includes a lid and spoon with each mug, made from polished bamboo, presented in cardboard box. **Product Size** : 100 x 117 mm, **Printing Options** : Screen Printing, UV Printing, Laser Engraving. - Lid Area.





### TM-035-FRS

Frosted Glass with Straw & Bamboo Lid. Our glass is made of high borosilicate material and resistant to high and low temperatures. The eco-friendly lid is completely BPA-free; silica gasket seals to achieve maximum spill-proof capability. The splash-proof sliding cover. **Product Size** : 75 x 140 mm. **Printing Options** : Sublimation, Screen Printing.



### TM-023-BM

Travel Cup. Single wall tumbler in 65% PLA corn and 35% wheat straw with bamboo lid and cork grip. It is made from fermented plant starch which is free of toxics. **Product Size** : 85 x 130 mm, **Printing Options** : Screen Printing, UV Printing, Laser Engraving. - Lid Area



### TM-020



Wheat Straw Cup with Silicone lid and band. **Product Size** : 95 x 115 mm. **Printing Options** : Screen Printing.



### TM-021



Bamboo Fiber Cup with Silicone lid and band. **Product Size** : 95 x 115 mm, **Printing Options** : Screen Printing.





# Promotional Ceramic Mugs

Ceramic mugs are durable and stylish,  
Perfect for bringing your favorite drink and your brand.





Original Color ▶ Pour in Hot Beverages Changing Stage ▶ Design Revealed

### 167-BK-M

Matte Black Color changing mugs, look simple enough at first glance. But pouring any hot drink into the heat sensitive glossy black ceramic mug reveals a special surprise. **Product Size** : 80 x 95 mm.

**Capacity** : 325 ml – 11 oz.

**Printing Options** : Sublimation.



### 147-D

White ceramic mug with glossy finish for sublimation printing.

**Product Size** : 80 x 95 mm

**Capacity** : 325 ml – 11 oz.

**Printing Options** : Sublimation.



### MU-CE147B-WHT

White Sublimation Ceramic Mugs with white window-type carton packing box.

**Product Size** : 80 x 95 mm

**Capacity** : 325 ml – 11 oz.

**Printing Options** : Sublimation.



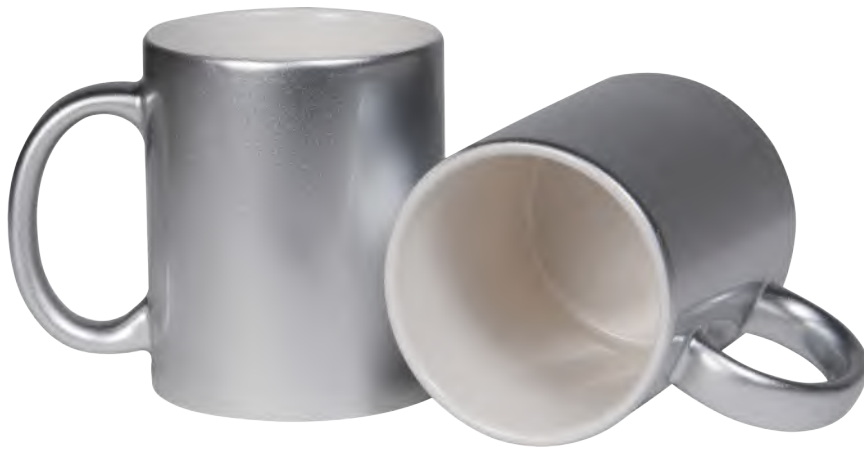
### 148

White Glossy Finish Sublimation Ceramic Mug.

**Product Size** : 85 x 115 mm.

**Capacity** : 440 ml – 15 oz.

**Printing Options** : Sublimation.



### 175-S

Glossy Finish Silver Sublimation Ceramic Mug

**Product Size :** 80 x 98 mm

**Capacity :** 325 ml – 11 oz.

**Printing Options :** Sublimation.



### 175-G

Glossy Finish Gold Sublimation Ceramic Mug

**Product Size :** 80 x 98 mm

**Capacity :** 325 ml – 11 oz.

**Printing Options :** Sublimation.



### 172

Glossy Finish Black Sublimation Ceramic Mug with White Printable Area.

**Product Size :** 80 x 98 mm

**Capacity :** 325 ml – 11 oz.

**Printing Options :** Sublimation.



### 191

Ceramic Mug with a Heart-shaped Handle. White mug with glossy finish, Delivered in set of two mugs. Perfect gift for couples in love.

**Capacity :** 325 ml – 11 oz.

**Printing Options :** Sublimation.





### 146N

Ceramic mug with a heart shaped handle & matching color of silicone cap to avoid leaks & non-slip silicone base.

**Product Size :** 85 x 125 mm, **Printing Options :** Sublimation.



### 168

Two-Tone Ceramic Mug

**Product Size :** 85 x 125 mm. **Capacity :** 325 ml - 11 oz.

**Printing Options :** Sublimation.



### 170

Two-Tone Ceramic Mug with Spoon

**Product Size :** 80 x 102 mm. **Capacity :** 325 ml - 11 oz.

**Printing Options :** Sublimation.





**MU-CE187-WHT**

Ceramic Tea Cup with Saucer  
**Cup Size** : 85 x 50 x 60 mm.  
**Saucer Size** : 105 x 15 mm.  
**Capacity** : 100 oz. **Weight** : 200 grams.  
**Printing Options** : Sublimation, DTF Printing.



**MU-CE188-WHT**

Ceramic Tea Cup with Saucer  
**Cup Size** : 80 x 45 x 55 mm.  
**Saucer Size** : 110 x 17 mm.  
**Capacity** : 77 oz. **Weight** : 244 grams.  
**Printing Options** : Sublimation, DTF Printing.



**180**

Ceramic Tea Cup with Saucer & spoon.  
**Product Size** : 50 x 80 mm.  
**Capacity** : 120 ml - 4 oz.  
**Printing Options** : Sublimation.



**154**

Ceramic Tea Cup  
**Product Size** : 50 x 80 mm.  
**Capacity** : 180 ml - 6 oz.  
**Printing Options** : Sublimation.

**169**

Curve Edges White Glossy Ceramic Mug  
Product Size : 70 x 105 mm.  
Capacity : 295 ml - 10 oz.  
Printing Options : Sublimation.



**149**

White Glossy Ceramic Beer Mug  
Product Size : 78 x 160 mm.  
Capacity : 590 ml - 20 oz.  
Printing Options : Sublimation.



**155**

Glossy Finish Sublimation Ceramic Mug  
Product Size : 70 x 105 mm.  
Capacity : 295 ml - 10 oz.  
Printing Options : Sublimation.



**182**

Conical Short Glass with Gold rims.  
Product Size : 45 x 60 mm. Capacity : 44 ml - 1.5 oz.  
Printing Options : Sublimation.



**TM-050-BK**

Stainless Steel Arabic Coffee Cup. Lightweight and easy to carry.  
Product Size : 65 x 45 mm. Printing Options : Laser Markings.



# Promotional Tea Coasters

Tea coaster are often overlooked as a simple accessory to have around your office or your house, but their practicality and style cannot be denied



## COA-01

Black Slate Coaster. made from natural stone material. This coaster make an impressive gift. **Product Size** : 100 x 100 mm. **Printing Options** : Laser Engraving, Screen Printing.



## COA-02

Cork Coaster. Durable and practical. Perfect for daily use and as tableware decoration. **Product Size** : 100 mm (dia). 5mm thickness. **Printing Options** : Screen Printing.





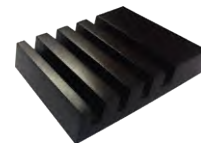
**COA-03**

Set of 4 coasters made of bamboo.  
Presented in a bamboo holder.  
**Product Size** : 110 x 35 x 110 mm. **Printing Options** : Laser Engraving, Screen Printing.



**224**

Square shaped with rounded corners.  
Made from Hardboard material.  
**Product Size** : 100 x 100 mm.  
**Printing Options** : Sublimation.



Tea Coaster  
Wooden Base  
**\*optional\***



**219-F**

Square Glass Tea Coaster  
**Product Size** : 100 x 100 mm. **Printing Options** : Sublimation.



**220-F**

Round Glass Tea Coaster  
**Product Size** : 100 x 100 mm. **Printing Options** : Sublimation.



# Promotional Lunchbox & Cutlery

Whether it is used by students to bring their meals from home or by professionals working long hours who need a convenient way to store and transport their lunches, the lunchbox plays a crucial role in ensuring that individuals have access to nutritious and satisfying meals throughout the day.





### LUN-SSB

Promotional Lunch Box. The lunch box is made of robust stainless steel & bamboo.  
**Product Size :** 166 x 130 x 60 mm. 1000 ml  
**Printing Options :** Laser Engraving, Screen Printing, UV Printing.



### LUN-GLB

Lunchbox in glass with bamboo lid and silicone band.  
**Product Size :** 200 x 150 x 60 mm. 900 ml  
**Printing Options :** Laser Engraving, Screen Printing, UV Printing.





### LUN-WSB

Eco-friendly lunchbox made of 50% PP and 50% wheat straw. With a matching bamboo lid and elastic closure strap.

**Product Size :** 185 x 105 x 105 mm.

**Printing Options :** Screen Printing, UV Printing, Laser Engraving.



### LUN-WS

Lunch box made from a combination of wheat straw & PP material. BPA free material, suitable for dishwasher, microwave oven and freezer. Includes an band with a fork and a knife.

**Product Size :** 165 x 120 x 55 mm.

**Printing Options :** Screen Printing, UV Printing.



### KFS-WS

Cutlery Set. A compact and convenient alternative to single-use plastic cutlery. Make a natural choice with our Wheat Straw Cutlery Set consisting of a knife, spoon and fork packed in a convenient wheat straw box.

**Product Size :** 200 x 20 x 55 mm.

**Printing Options :** Screen Printing, UV Printing.

